



Principal's Address

15 May 2026



Forge Connections, Wondrous Radiance

We Are  ne

Preparing our Students for a New Tomorrow



**ACCELERATING SPEED
OF TECHNOLOGICAL
ADVANCEMENT & DISRUPTION**
Changes & Opportunities



**A DIGITALLY CONNECTED BUT
OTHERWISE FRAGMENTED WORLD**
Ideologies & Cultures



**WHAT DOES OUR
WORLD LOOK LIKE
RIGHT NOW?**



**AN EVOLVING SOCIAL
FABRIC**
Fault Lines & Cohesion



**A SHRINKING & AGEING
WORKFORCE**
Manpower Limitations



**CHANGING WORK
EXPECTATIONS**
Flexibility & Adaptability



**STRESS & OVER-EMPHASIS ON
ACADEMIC QUALIFICATIONS**
Skills & Dispositions



**INCREASING FOCUS ON
MENTAL HEALTH & WELL-BEING**
Resilience & Mindsets

WRSS Beliefs

WRSS Beliefs

- Every Student is Our Student
- Every Student is a Leader
- Every Experience a Learning Opportunity

- Every Staff a Dedicated Learner
- Every Teacher a Curriculum Designer
- Every Teacher a CCE Teacher



WRSS Identity, Vision, Mission, Values

Motto

Forward with Wisdom

- *Forward-looking, move ahead with courage, discernment, and integrity.*
- *Education is not merely about acquiring knowledge but about applying wisdom to navigate an ever-changing future.*




Vision

Forward-looking



Compassionate



Wise  **and**

Resilient  **Leaders**

Vision



curious, innovative, adaptable to change



caring, inclusive, and ready to serve



decision-making

thoughtful, reflective, and principled in



Leaders - persevering through challenges
and **inspiring others** with empathy

Mission

**Empowering every
student to grow and lead
with purpose and values**

Mission

- Education is a **shared endeavour** between staff, students, and the wider community.
- We **provide platforms** for **student agency** and focus on nurturing each student's potential, guiding them to be **purposeful learners**, and **empowering** them to **lead and contribute** meaningfully to society.

Values

We RISE²

Respect Integrity Selflessness

Empathy Excellence

We RISE² symbolises
“rise *higher*, together, with heart”

Motto

Forward with Wisdom

Mission

**Empowering
every student to
grow and lead with
purpose and
values**



Vision

**Forward-Looking,
Compassionate,
Wise & Resilient
Leaders**

Values

We RISE²
Respect ♦ Integrity ♦ Selflessness
♦ Empathy ♦ Excellence

Student Outcome

A WRSS graduate will be:

- **Future-ready** – adaptable and wise in decision-making
- **Compassionate & Caring** – empathetic, inclusive, and service-oriented
- **Resilient & Responsible** – principled, persevering, self-directing and dependable
- **A Leader in Action** – uplifting others and contributing meaningfully to society

We RISE²

Value	What do we do
Respect	Listen actively, appreciate differences, treat others fairly
Integrity	Be honest, own up to mistakes, do the right thing even when it is difficult
Selflessness	Volunteer, support peers in need, contribute to school and community
Empathy	Show kindness, stand against hurtful behaviours, check in on peers' well-being
Excellence	Adopt a growth mindset, put in best effort, embrace challenges, learn from mistakes, celebrate progress

Strive for Excellence

not perfection

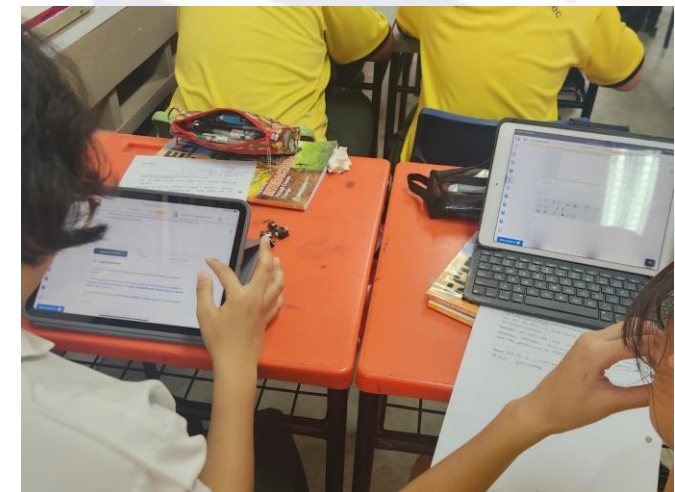


Every Experience a Learning Opportunity



**Supporting our Students to
achieve their aspirations**

Developing life skills through various school activities

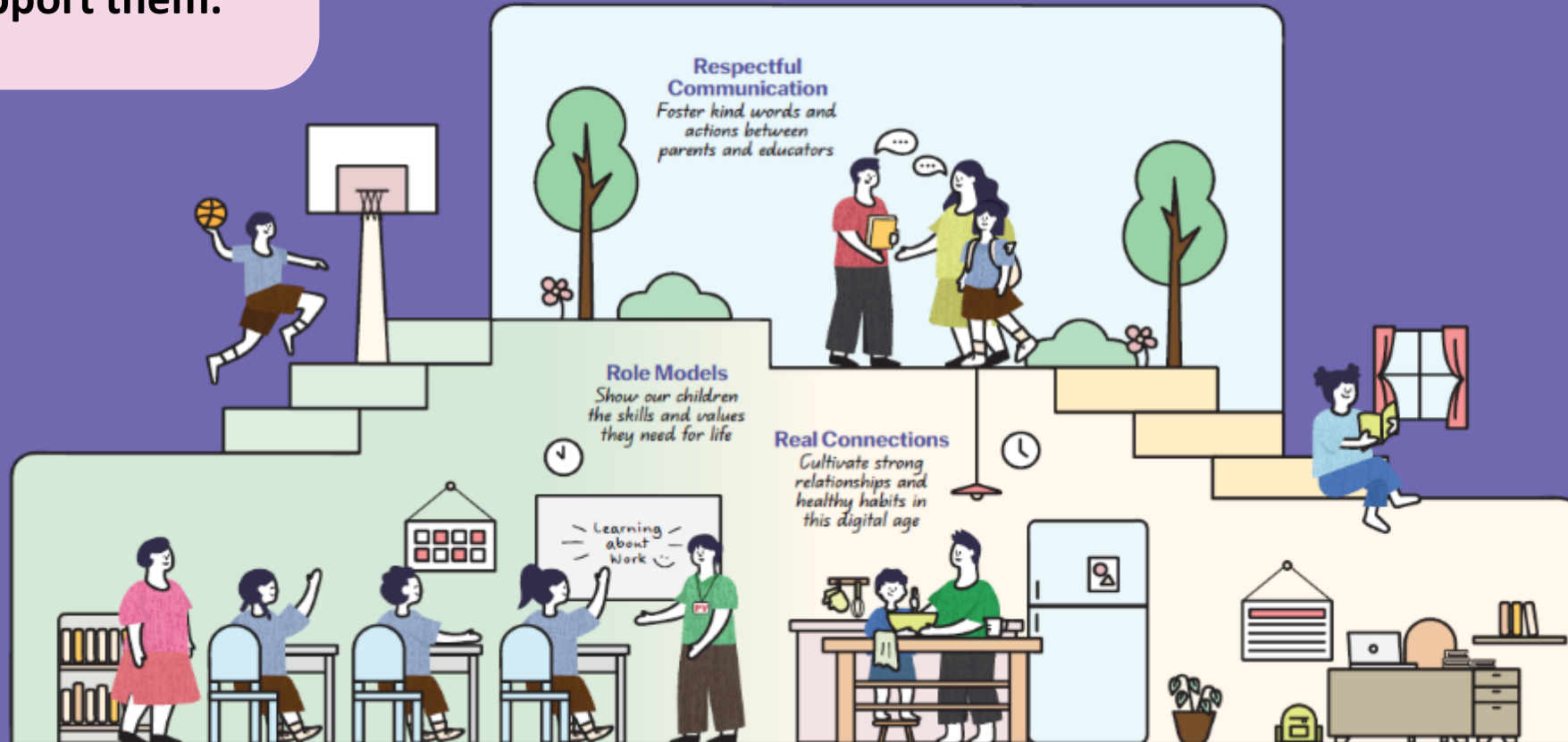


School-Home Partnership

Our children do best when schools and parents work hand in hand to support them.

Guidelines for School-Home Partnership

Raising a Happy, Confident, and Kind Generation Together



No smartphone use in secondary schools from 2026, including during recess and CCAs

**Strictly
No Handphone*
Policy**



Why is this important?

- **Perspective of Long-Term Considerations**
- **Healthier Habits**
 - To curb excessive screen time and promote better digital well-being.
- **Improved Focus**
 - To reduce distractions in class and during activities.
- **More Interaction**
 - To encourage face-to-face communication among peers.